

SOLUTION

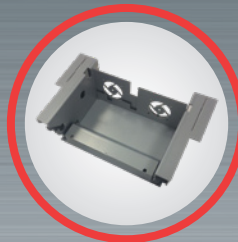
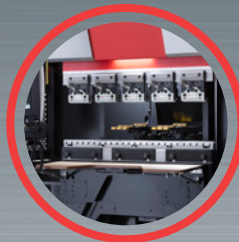
BENDING



EG 4010



SERVO ELECTRIC PRESS BRAKE FOR ULTRA-HIGH PRODUCTIVITY & PRECISION



AMADA

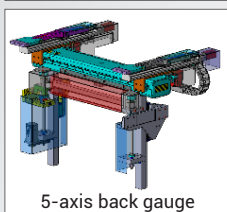
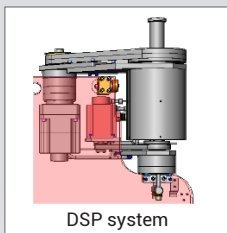
DATA SHEET

EG 4010

SERVO ELECTRIC PRESS BRAKE FOR ULTRA-HIGH PRODUCTIVITY & PRECISION

Utilising a small footprint, the EG-4010 servo electric press brake offers a range of features for comfortable processing of complex parts with high productivity and accuracy.

The patented AMADA Dual Servo Press (DSP) drive is extremely fast, reactive and dynamic, providing faster cycle times and more parts per hour



MAIN FEATURES

- High performance upper beam with patented DSP system
- Flexible back gauge with Delta-X function and U-shape finger
- Ergonomic solution
- Small layout and footprint
- High accuracy and stable positioning of upper beam and back gauge

BENEFITS

- Highly productive and flexible processing of small and complex parts
- Ergonomic solution for operator comfort
- High accuracy minimises trial bending
- Drastic reduction of power consumption and maintenance cost

MACHINE SPECIFICATIONS

EG-4010			
Bending capacity	kN	400	
Beam length	mm	1050	
Distance between frames	mm	710	
Open height	mm	420	
Upper beam stroke	mm	150	
Working height	mm	980*	
Power consumption (only Y axis servo motor)	kW	5.3	
Oil capacity	l	-	
Approach speed (with additional protection option)	mm/s	220	
Bending speed	mm/s	25**	
Return speed	mm/s	220	
Positioning accuracy	mm	± 0.001	
Machine mass	kg	2700	

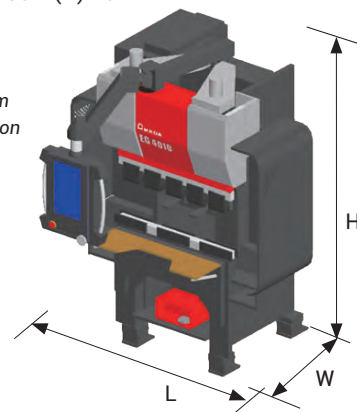
*Without die holder ** Depending on V- size

MACHINE DIMENSIONS

EG-4010
(L) 1770 x (W) 1980 x (H) 2371*

Unit: mm

Dimensions include
NC with pendant arm
at maximum extension



*with 50 mm high block

5-AXIS BACK GAUGE

		X axis	R axis	Z axis
Operating stroke	mm	300	150	622
Speed	mm/s	1000	333	1000
Accuracy	mm	± 0.003	± 0.05	± 0.02

Specifications, appearance and equipment are subject to change without notice by reason of improvement.
Hazard prevention measures are removed in the photos used in this sheet.

AMADA UK LTD.

Spennells Valley Road,
Kidderminster,
Worcestershire DY10 1XS
United Kingdom
Tel: +44 (0)1562 749500
Fax: +44 (0)1562 749510
www.amada.co.uk

AMADA SA

Paris Nord II
96, avenue de la Pyramide
93290 Tremblay en France
France
Tél : +33 (0)1 49 90 30 00
Fax : +33 (0)1 49 90 31 99
www.amada.fr

AMADA GmbH

Amada Allee 1
42781 Haan
Germany
Tel: +49 (0)2104 2126-0
Fax: +49 (0)2104 2126-999
www.amada.de

AMADA ITALIA S.r.l.

Via Amada I., 1/3
29010 Pontenure
(PC)
Italia
Tel: +39 (0)523-872111
Fax: +39 (0)523-872101
www.amada.it

